

A/C AC AFF AHU AIC AMP, A	AIR CONDITIONER ALTERNATING CURRENT ABOVE FINISHED FLOOR AIR HANDLING UNIT AMPERE INTERRUPTING CAPACITY AMPERE	FA FIXT FLA	FIRE ALARM FIXTURE FULL LOAD AMPS	N.C. NF N.L.C. N.O.	NORMALLY CLOSED NON FUSED NOT IN CONTRACT NORMALLY OPEN
C C.B CCTV CIRC. COL. COND CONT CU	CONDUIT CIRCUIT BREAKER CLOSED CIRCUIT TELEVISION CIRCUIT COLUMN CONDUIT CONTINUED COPPER	G GF	GROUND GROUND FAULT INTERRUPTER	OC OL	ON CENTER OVER LOAD
DET DF DIA DISC DISTR DWG	DETAIL DRINKING FOUNTAIN DIAMETER DISCONNECT DISTRIBUTION DRAWING	HP HV HZ	HORSEPOWER HIGH VOLTAGE HERTZ	P PA PE PNL PWR	POLE PUBLIC ADDRESS PHOTO ELECTRIC PANEL POWER
(E) EL ELEC EWC EX EXO EXT LOC	EXISTING EXHAUST FAN ELECTRICAL ELECTRIC WATER COOLER EXISTING EXTERNALLY OPERATED EXTERIOR LOCATION	IP IFS IG	INTERCOM PHONE INTERGRATED FACILITY SYSTEM ISOLATED GROUND	RM RT RTU	ROOM RAIN TIGHT ROOF TOP UNIT
		J- BOX	JUNCTION BOX	SW RTU	SWITCH ROOF TOP UNIT
		KVA	KILOVOLT-AMPS	SW BD	SWITCH SWITCHBOARD
		LCL LTG LV	LONG CONTINUOUS LOAD LIGHTING LOW VOLTAGE	TC TELE TYP	TIMECLOCK TELEPHONE TYPICAL
		MAX MCA MCC MCB MECH MLO MH MOC	MINIMUM MINIMUM CIRCUIT AMPACITY MOTOR CONTROL CENTER MAIN CIRCUIT BREAKER MECHANICAL MAIN LUG ONLY MOUNTING HEIGHT MAXIMUM OVER CURRENT PROTECTION	V WP	VOLT WEATHERPROOF

ELECTRICAL ABBREVIATIONS

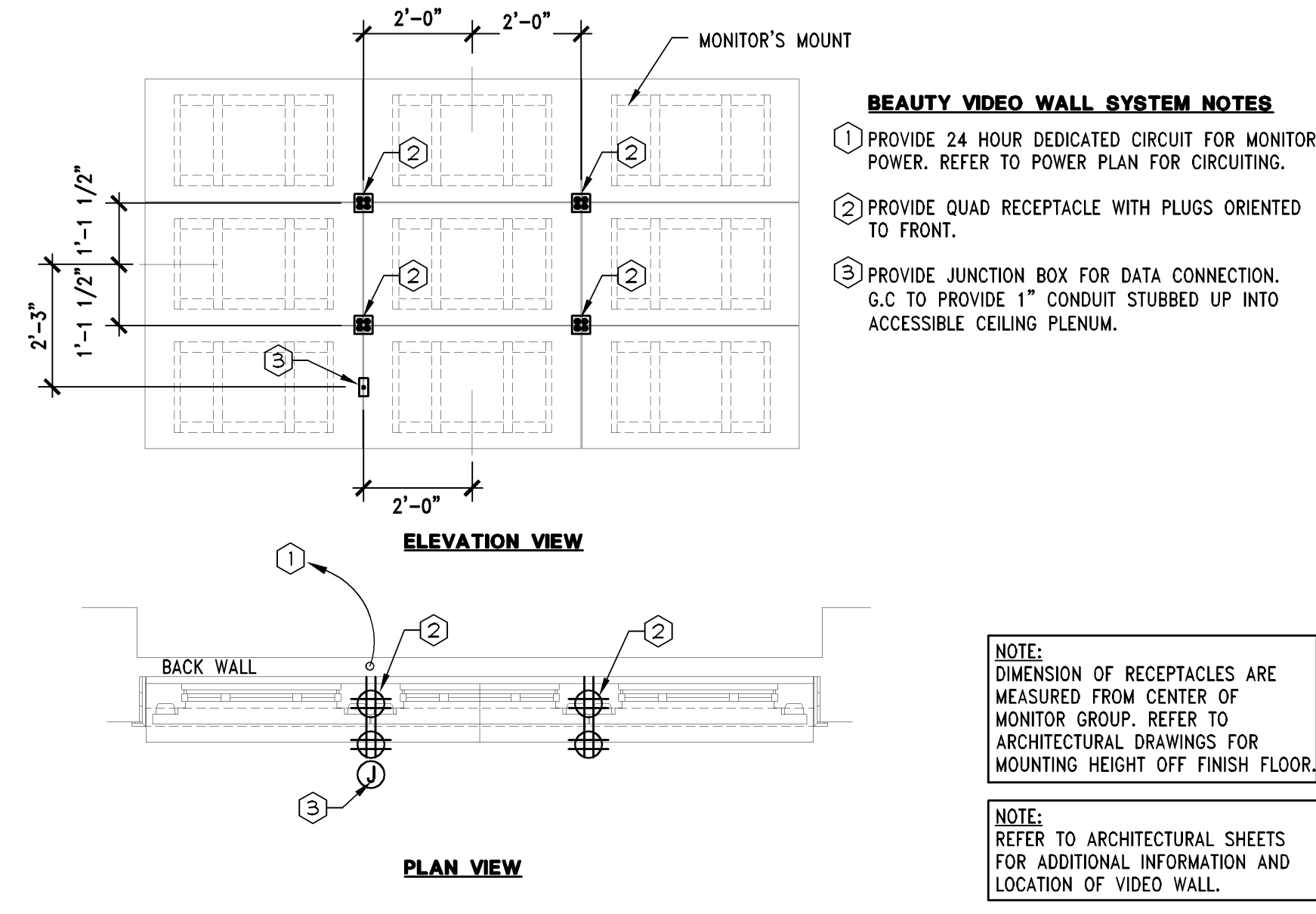
3/8" = 1'-0"
05D-E0403-E00-ABBR

S
09/06/13

VIDEO WALL DETAIL 46"- (WALL MOUNTED)

3/8" = 1'-0"
05D-E0403-E00-VVWM

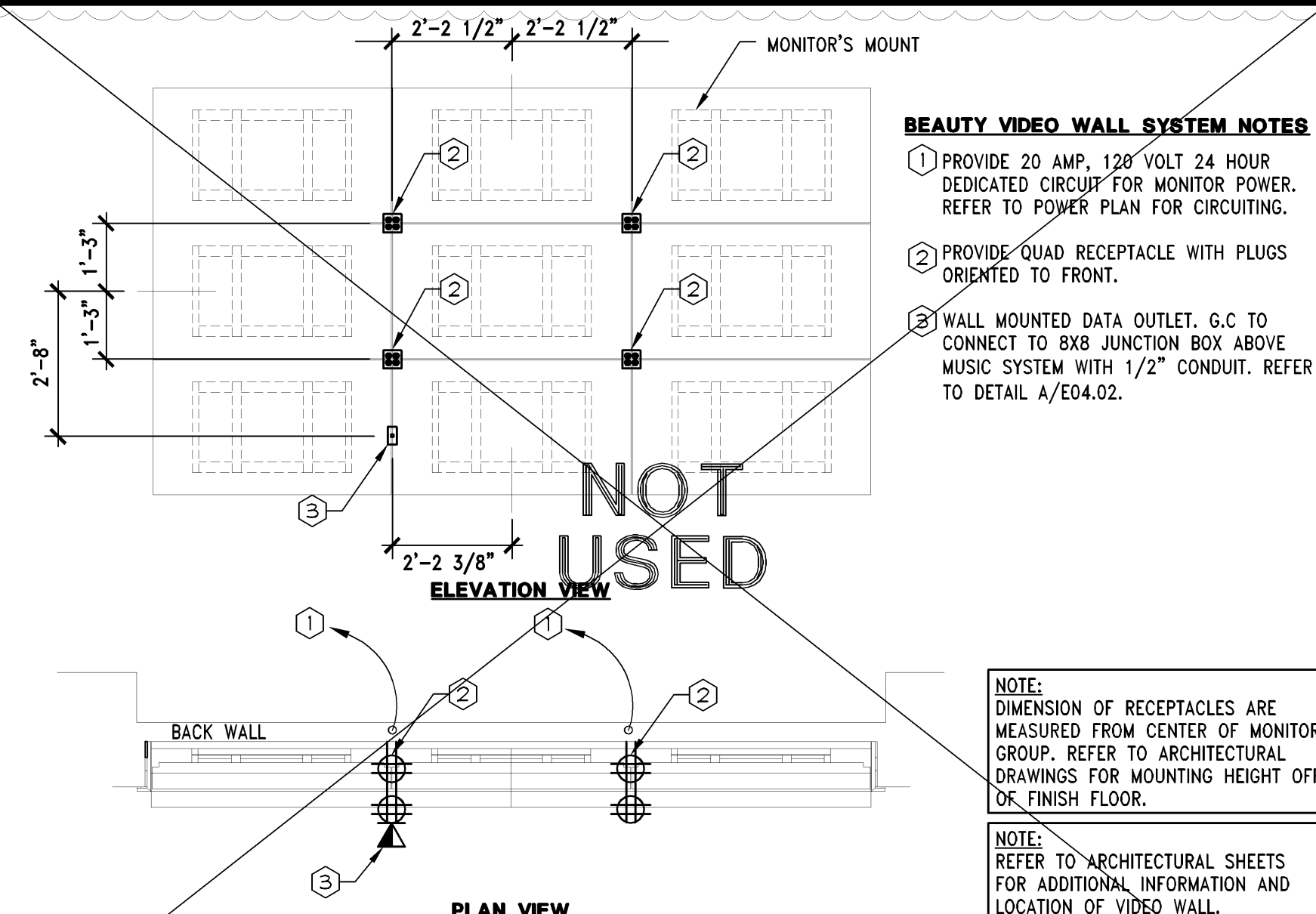
M
04/04/14



VIDEO WALL DETAIL 55" - (WALL MOUNTED)

3/8" = 1'-0"
05D-E0403-L00-VVWM

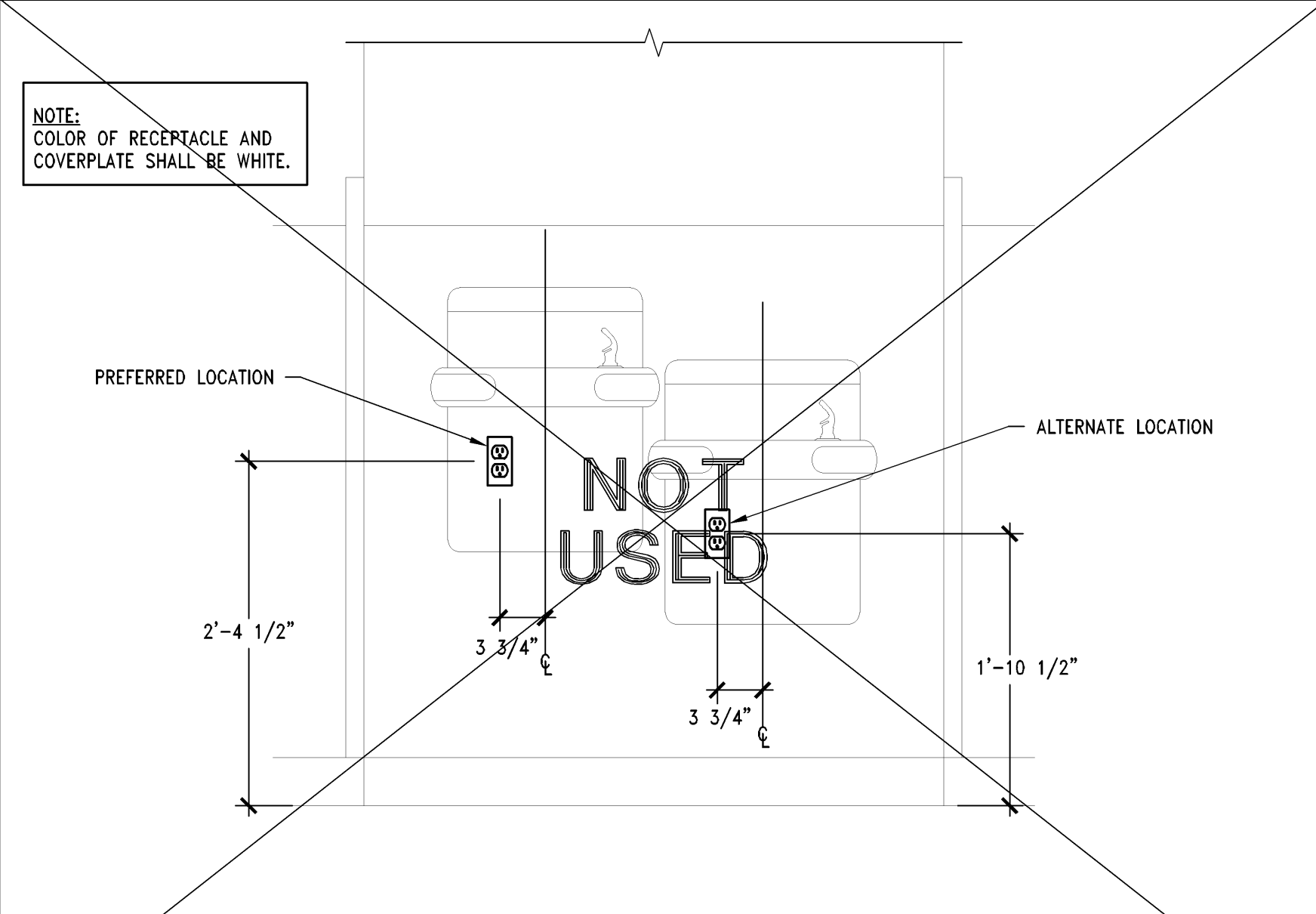
L
11/07/14



VIDEO WALL DETAIL 60" - (WALL MOUNTED)

3/8" = 1'-0"
05D-E0403-E02-VVWM

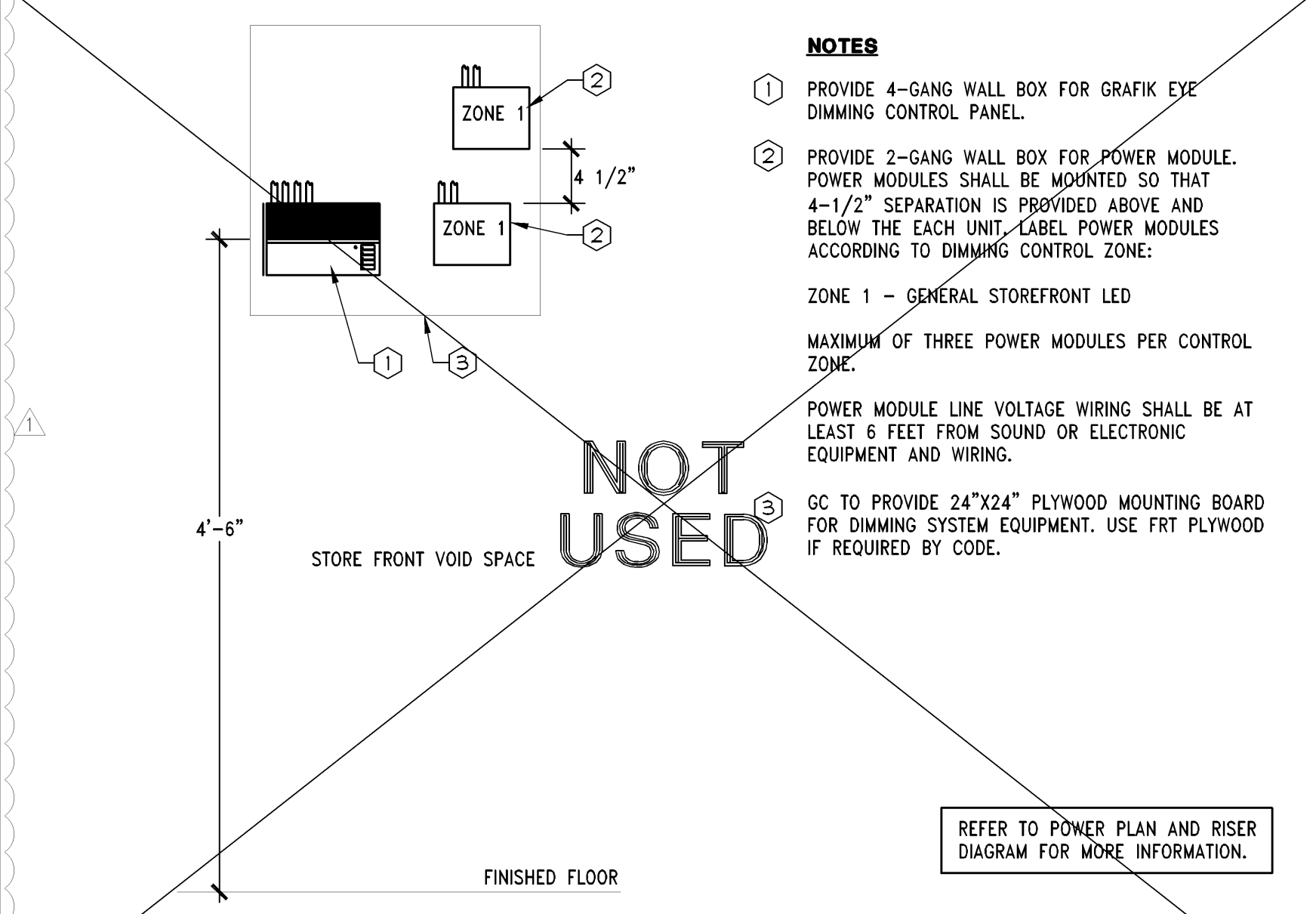
K
04/04/14



DRINKING FOUNTAIN POWER

1" = 1'-0"
05D-E0403-H00-DKFT

H
05/22/13



STOREFRONT DIMMING SYSTEM ELEV.

1" = 1'-0"
05D-E0403-G00-SDIM

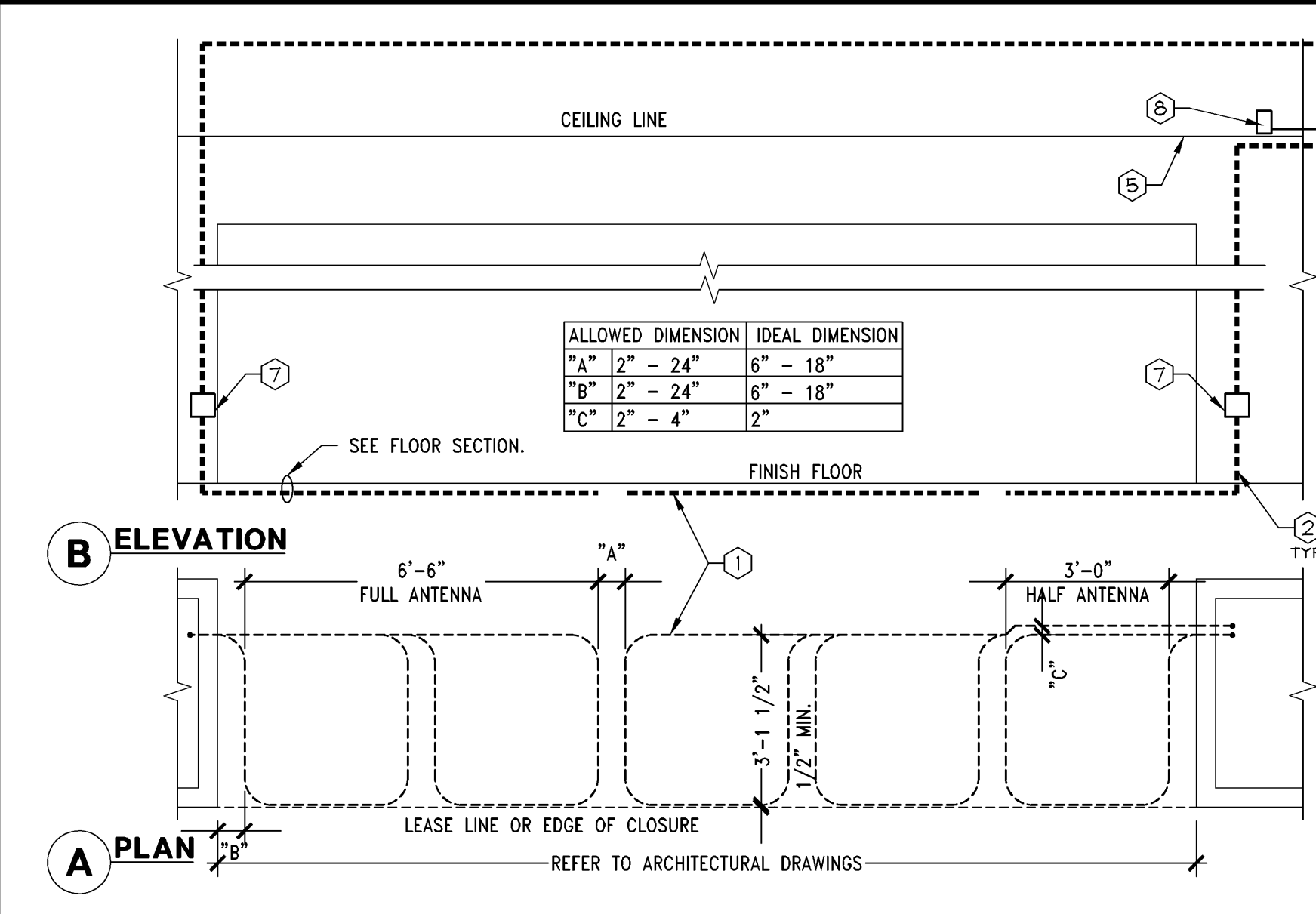
G
08/17/13



STOREFRONT DIMMING SYSTEM ELEV.

1" = 1'-0"
05D-E0403-G00-SDIM

G
08/17/13

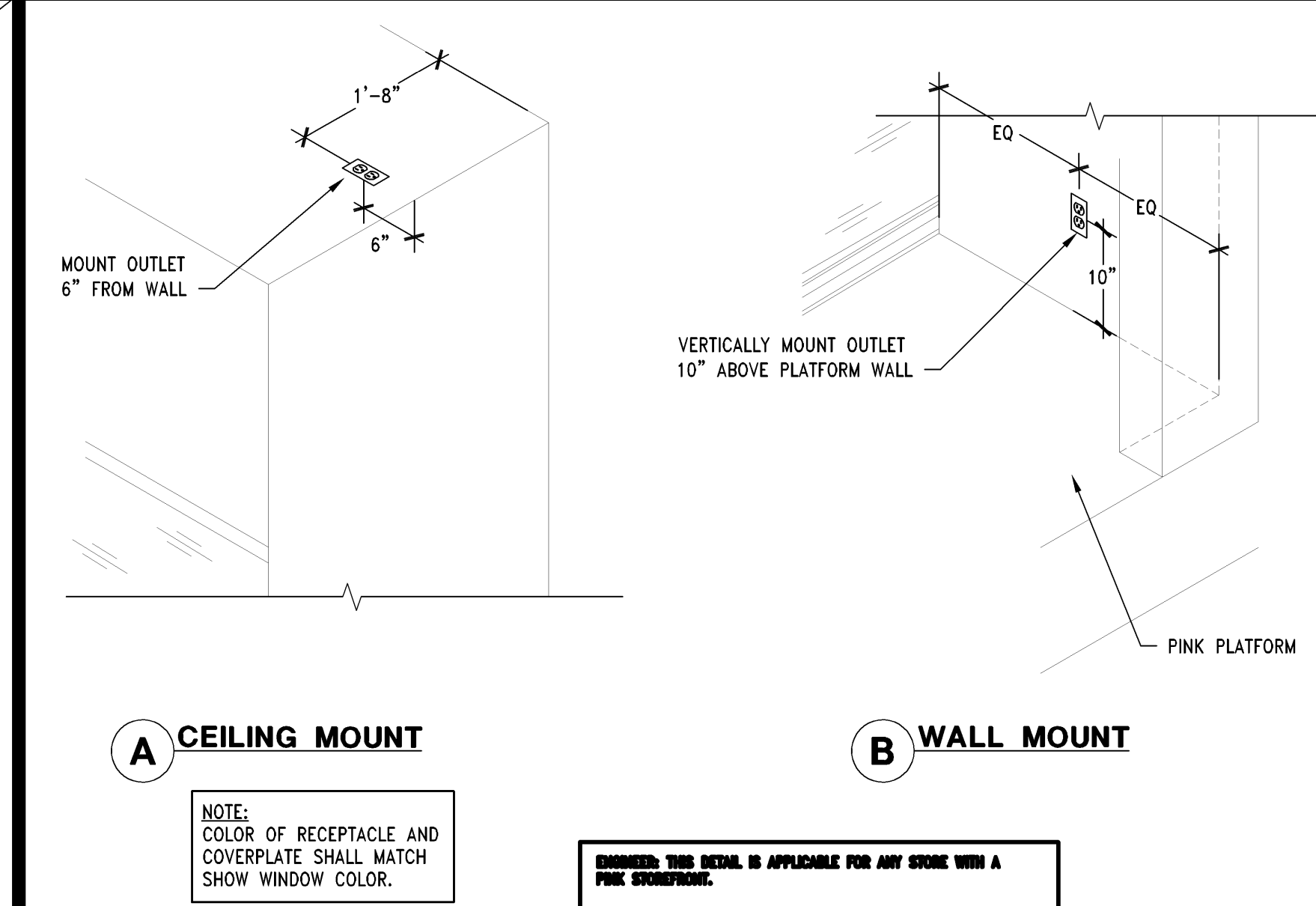


SENSORMATIC SYSTEM - AMS2020 ANTENNA (ABOVE CEILING OR VOID SPACE)

3/8" = 1'-0"
05D-E0403-A00-SENS

A
04/04/14

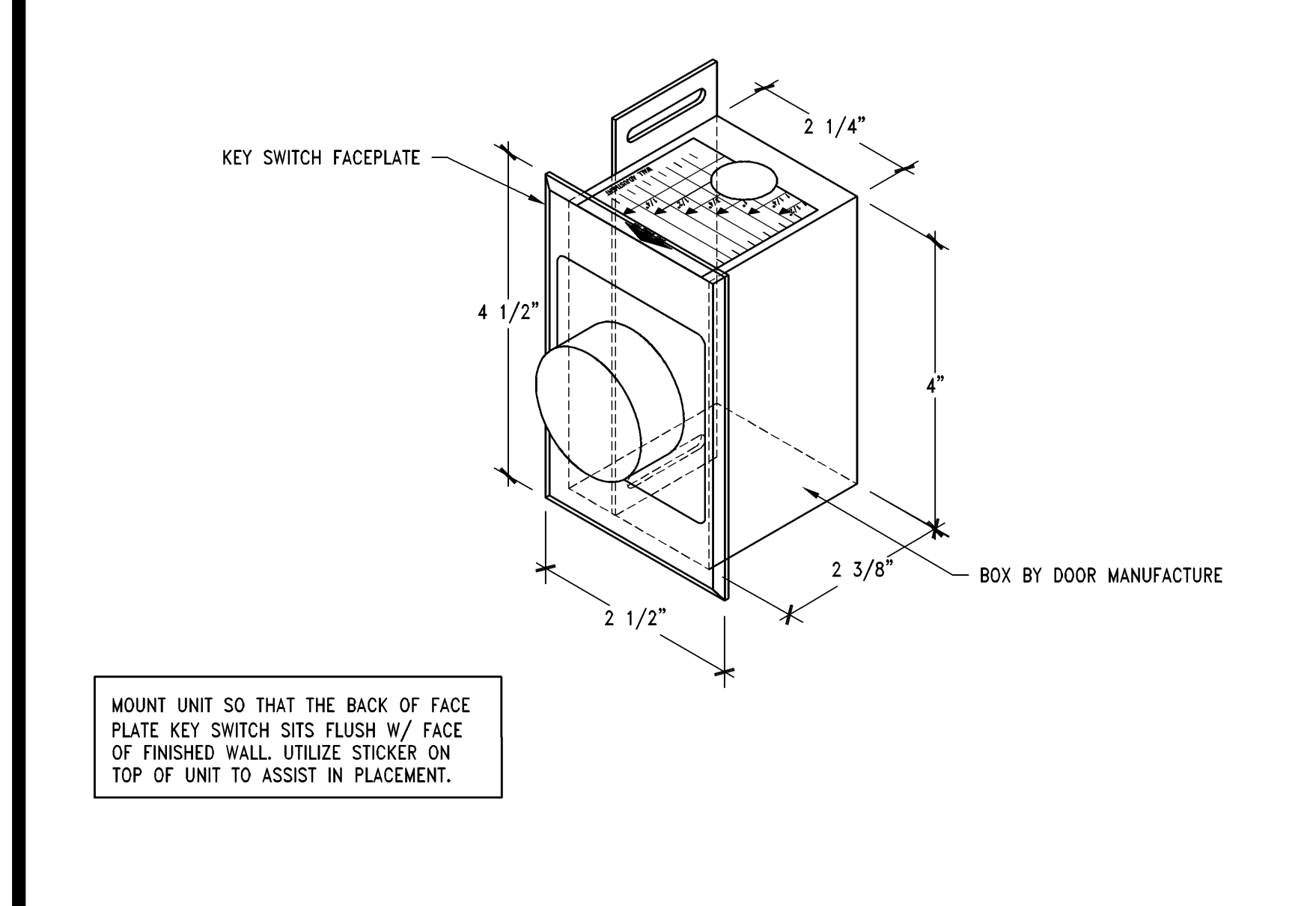
SENSORMATIC SYSTEM - AMS2020 ANTENNA (ABOVE CEILING OR VOID SPACE)



PINK SHOW WINDOW RECEPTACLE DETAIL

3/4" = 1'-0"
05D-E0403-D00-RECP

D
12/17/12



BARREL KEY SWITCH

6" = 1'-0"
05D-E0403-C00-BKEY

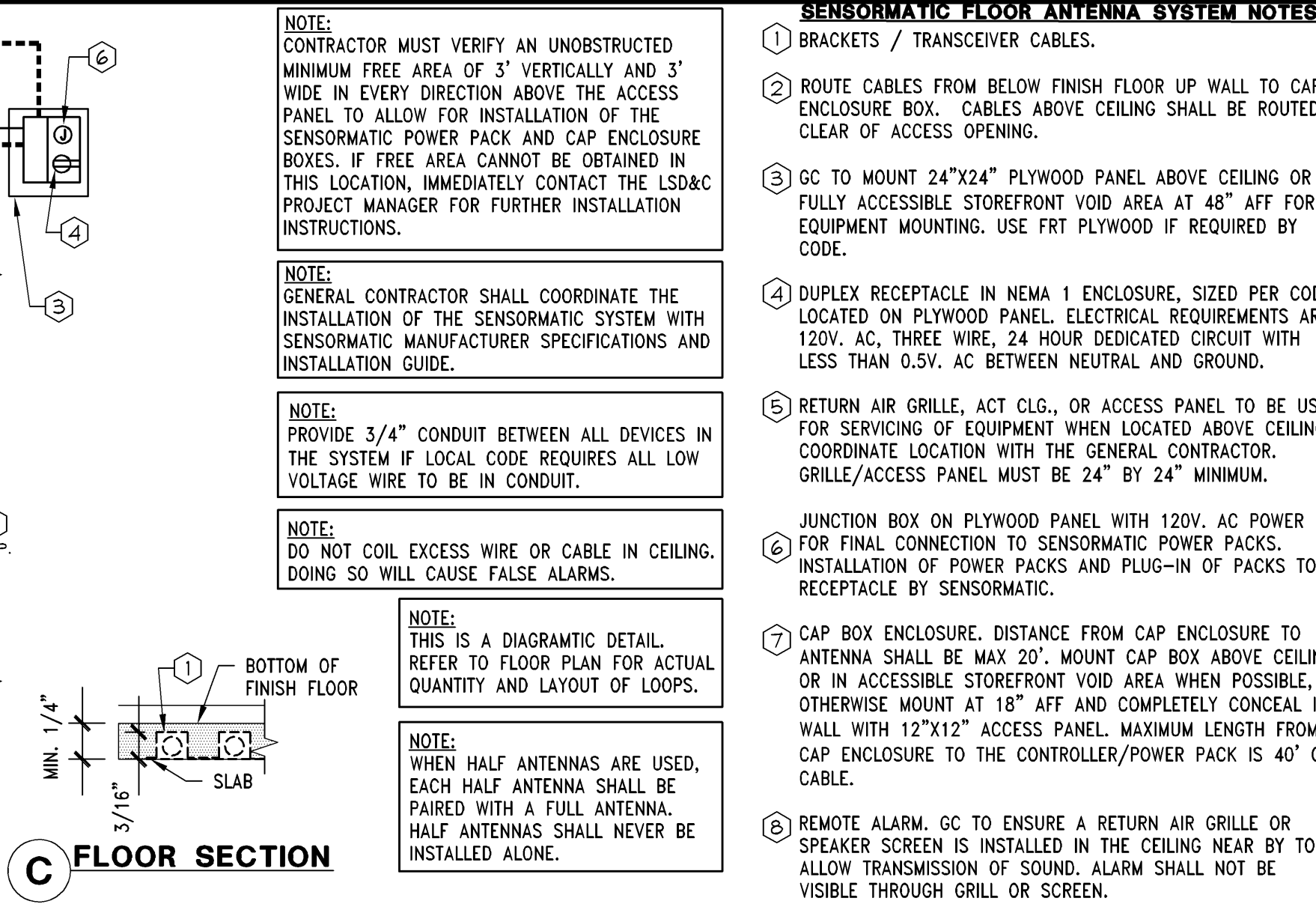
C
08/05/11



SENSORMATIC FLOOR ANTENNA SYSTEM NOTES

3/8" = 1'-0"
05D-E0403-A00-SENS

A
04/04/14



SENSORMATIC FLOOR ANTENNA SYSTEM NOTES

3/8" = 1'-0"
05D-E0403-A00-SENS

A
04/04/14

SENSORMATIC FLOOR ANTENNA SYSTEM NOTES